

**Australian Institute of Building  
Information Publication Number 22**

---

**Membership Pathways and Procedures**



© Copyright The Australian Institute of Building August 2006

First Edition: August 2006

This work is copyright. Apart from any use permitted by the Copyright Act 1968, no part may be reproduced by any process without the prior written permission of The Australian Institute of Building. Requests and inquiries concerning reproduction should be addressed to :

Membership and Education Manager  
The Australian Institute of Building  
GPO Box 1467  
CANBERRA ACT 2601

E-mail: [education@aib.org.au](mailto:education@aib.org.au)  
Telephone: +61 (0) 2 6247 7433  
Facsimile: +61 (0) 2 6248 9030

[www.aib.org.au](http://www.aib.org.au)

# Contents

---

Chapter 1	<b>Membership Pathways and Procedures - Summary</b>	Page 3
Chapter 2	<b>Direct Entry to <u>Corporate</u> Membership - Pathways and Procedures</b>	Page 4
Chapter 3	<b>R.P.L. Entry to <u>Corporate</u> Membership - Pathways and Procedures</b>	Page 5
Chapter 4	<b>Direct Entry to <u>Associate</u> Membership - Pathways and Procedures</b>	Page 6
Chapter 5	<b>R.P.L. Entry to <u>Associate</u> Membership - Pathways and Procedures</b>	Page 7

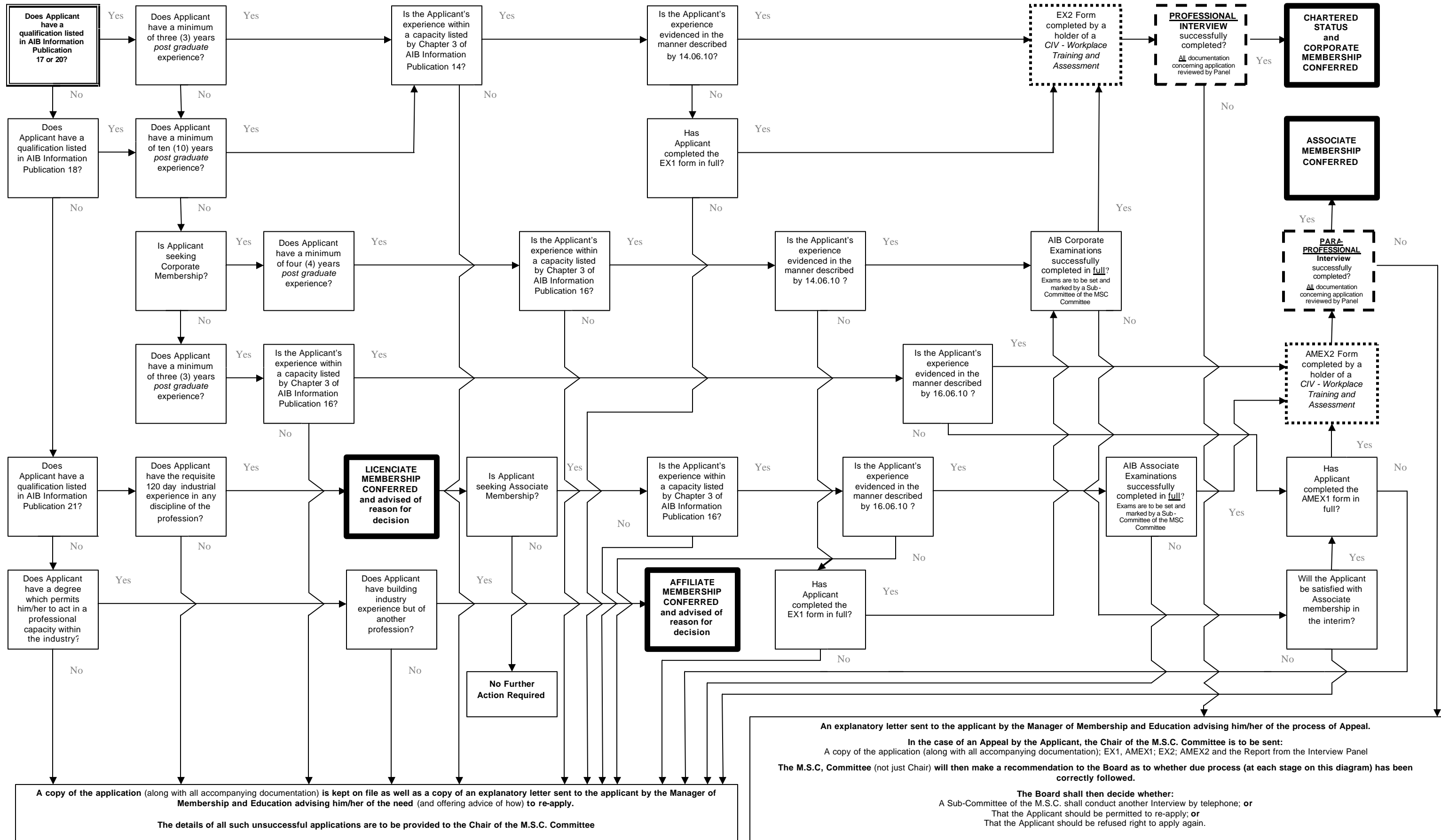
## **Abbreviations**

A.C.A.	-	Australian Constructors Association
A.E.I.	-	Australian Education International
A.I.B.S.	-	Australian Institute of Building Surveyors
A.I.Q.S.	-	Australian Institute of Quantity Surveyors
A.I.B.	-	Australian Institute of Building
A.Q.F.	-	Australian Qualification Framework
A.Q.T.F.	-	Australian Quality Training Framework
C.B.S.	-	Competency Based Standards
C.P.S.I.S.C.	-	Construction and Property Services Industry Skills Council
C.T.A.	-	Construction Training Australia
I.E.Aust.	-	Institution of Engineers Australia (Engineers Australia)
H.I.A.	-	Housing Industry Association
M.B.A.	-	Master Builders Association
M.S.C.	-	Membership Services Committee (a national committee of the A.I.B.)
N.B.P.R.	-	National Building Professionals Register
N.B.T.R.	-	National Building Technologists Register
N.O.O.S.R.	-	National Office of Overseas Skills Recognition
P.C.A.	-	Private Certifiers Association
R.A.I.A.	-	Royal Australian Institute of Architects
R.P.L.	-	Recognition of Prior Learning
U.D.I.A.	-	Urban Development Institute of Australia



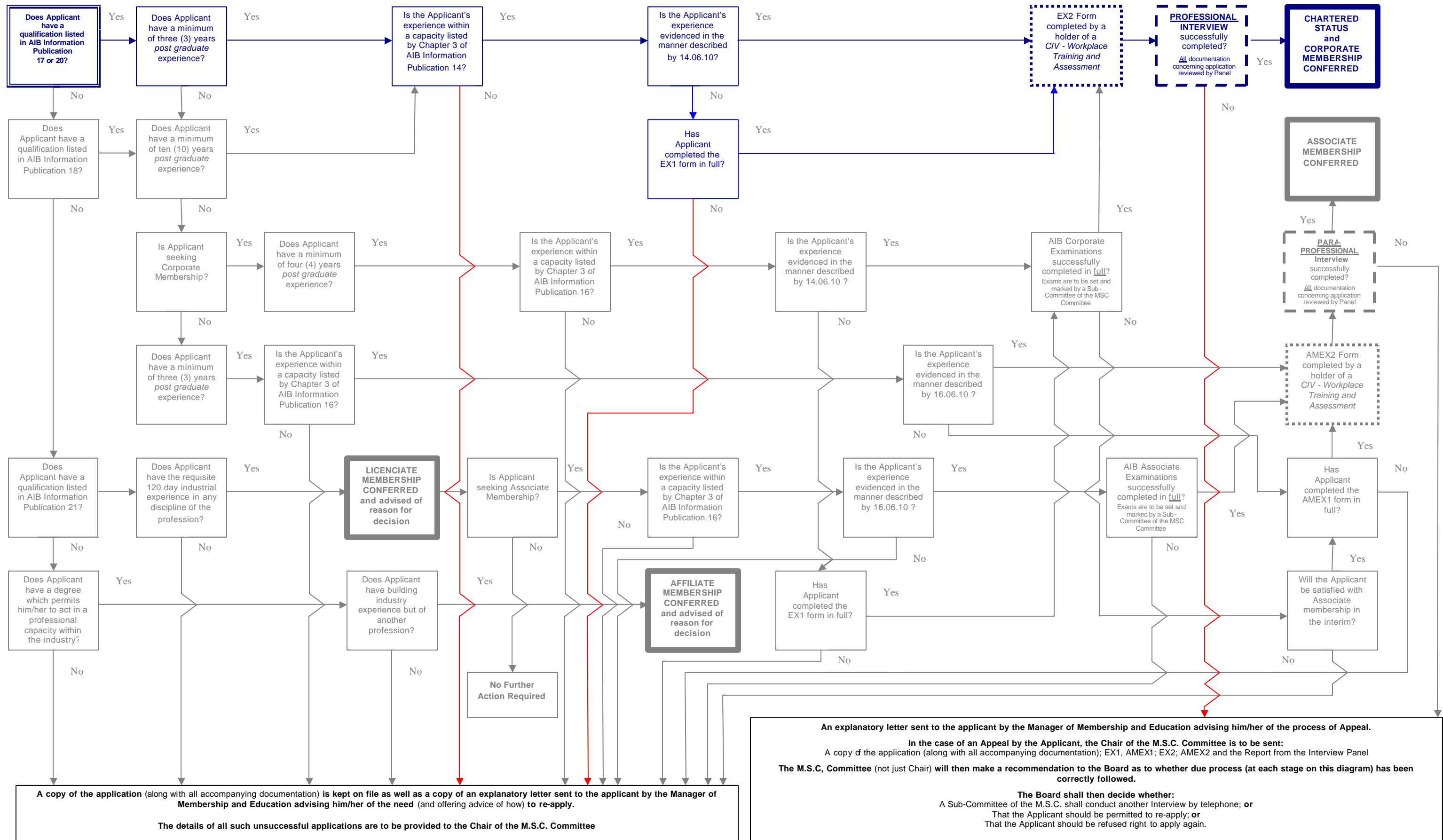
# THE AUSTRALIAN INSTITUTE OF BUILDING INCORPORATED BY ROYAL CHARTER

## Chapter 1 Membership Pathways and Procedures - Summary



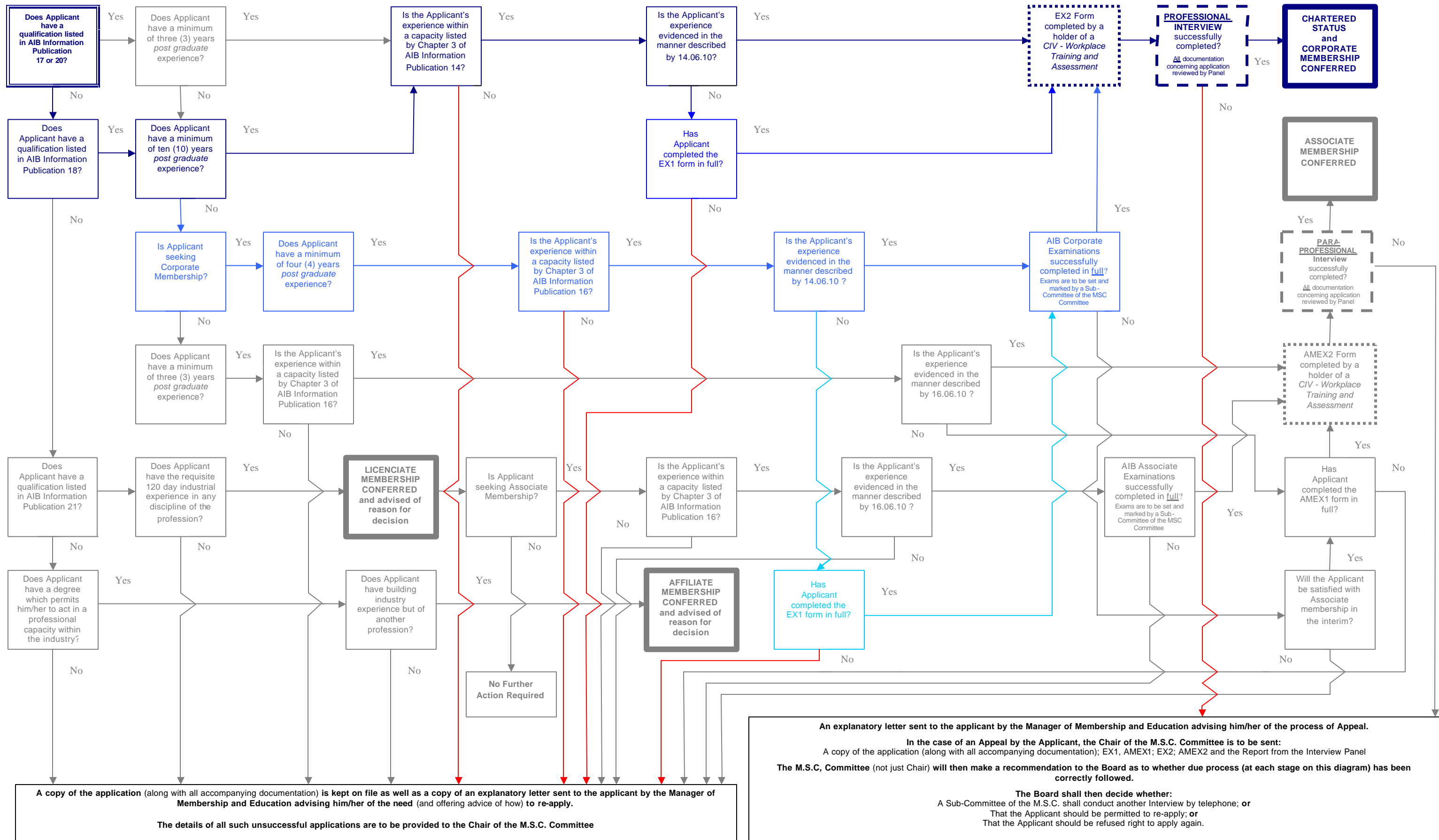


Chapter 2 Direct Entry to Corporate Membership - Pathways and Procedures



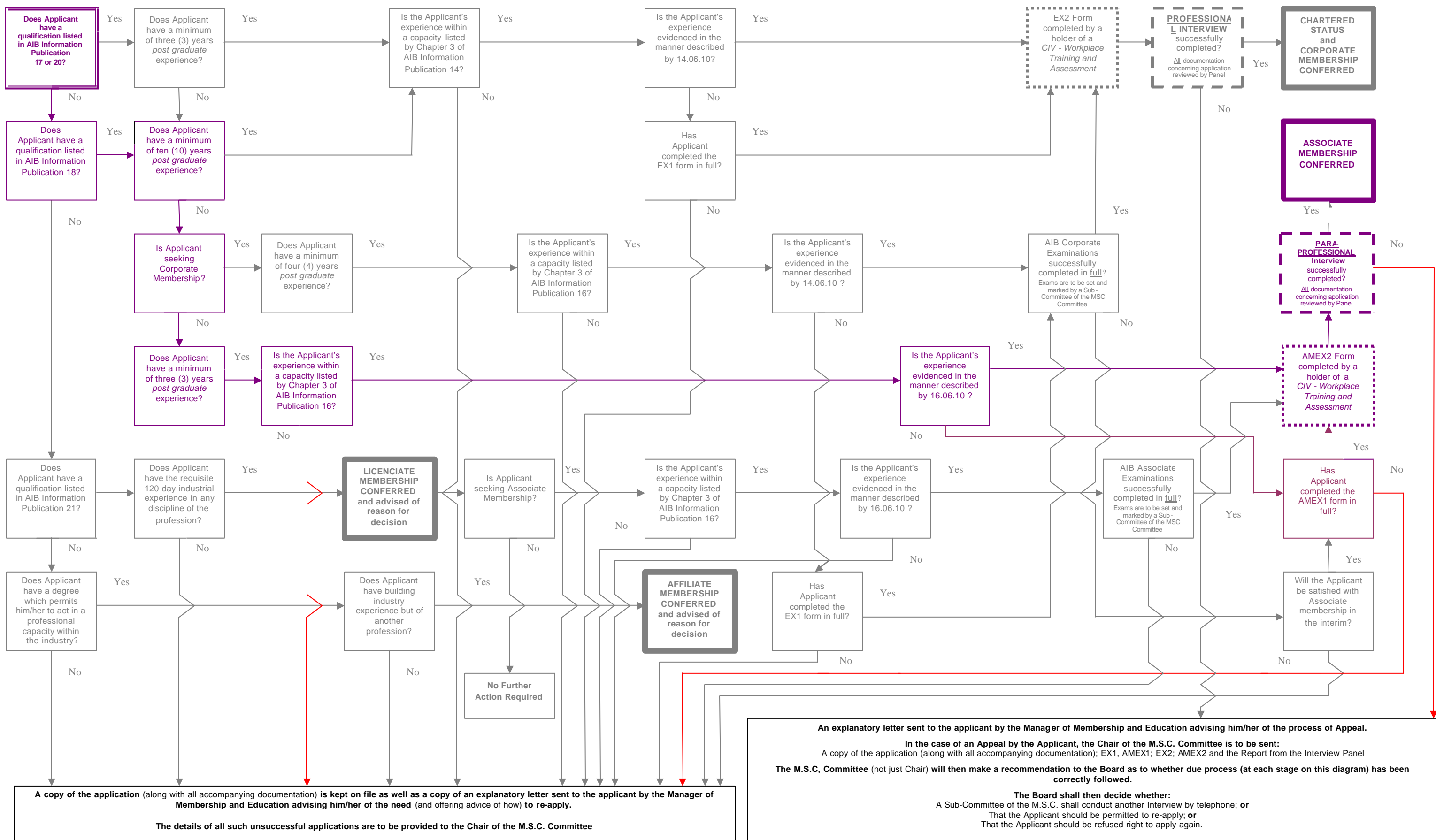


### Chapter 3 R.P.L. Entry to Corporate Membership - Pathways and Procedures





# Chapter 4 Direct Entry to Associate Membership - Pathways and Procedures





## Chapter 5 R.P.L Entry to Associate Membership - Pathways and Procedures

